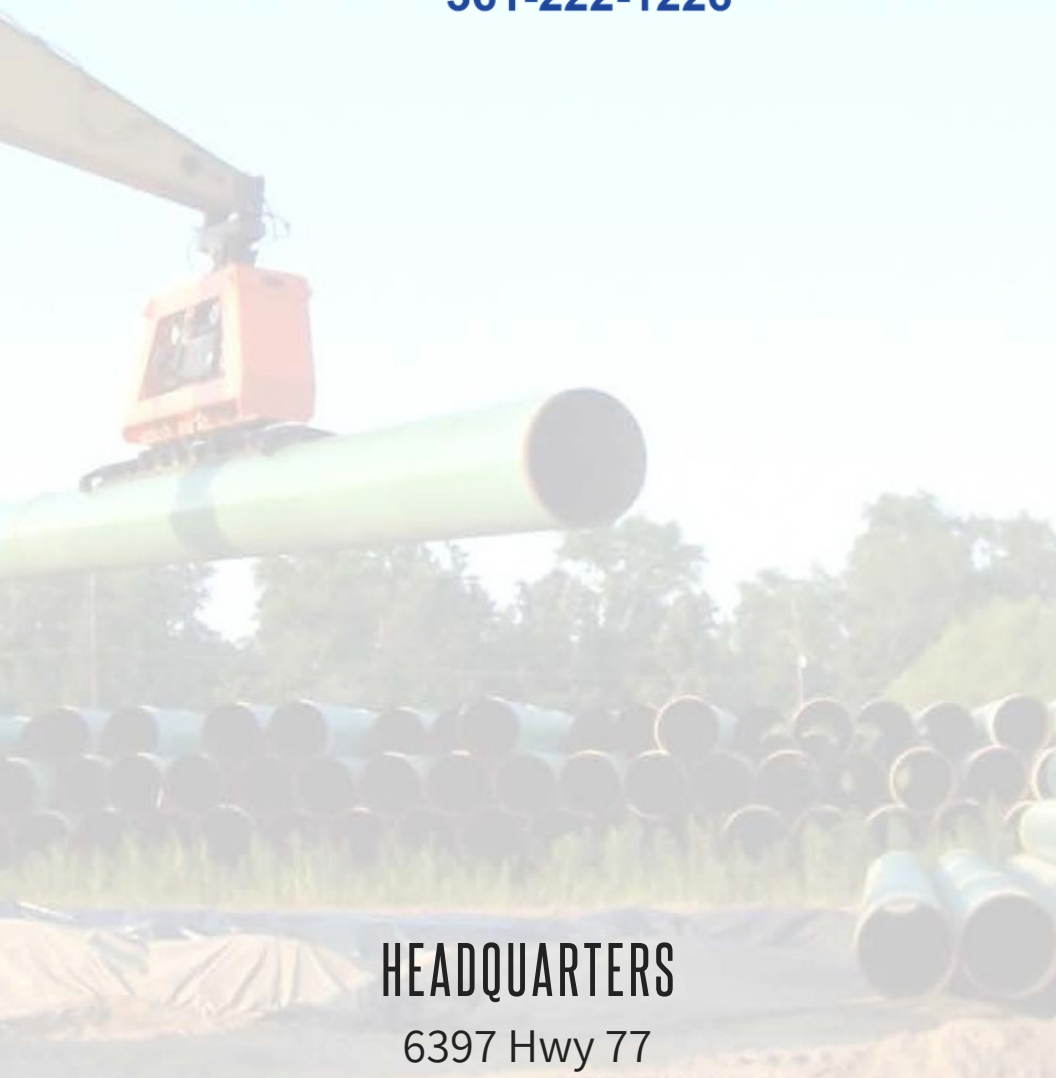




# EPIC

Energy Services, LLC

361-222-1226



**HEADQUARTERS**

6397 Hwy 77

Odem, TX 78370

The background of the slide is a faded photograph of a construction site. It shows a large orange excavator with "DOOSAN" written on its arm, a black excavator, and a worker in a plaid shirt standing near a trench. A large pipe is visible in the trench.

# TABLE OF CONTENTS:

- 1.) About Us
- 2.) Services
- 3.) Representative Projects
- 4.) Management Experience
- 5.) Safety

## ABOUT US:

Our management team has over 100 combined years of experience in the pipeline industry and civil construction. As a result, Epic Energy Services (EPIC) is able to attract qualified and experienced personnel to provide quality service for our clients.



We currently employ a core group of qualified skilled Superintendents, Foremen, Welders, and Laborers that assist our current customers. As projects require, our management team can source the additional supervision, and skilled labor to meet any challenge. We pride ourselves on our diverse portfolio and strive to expand our customer services.



## PIPELINE SERVICES:



- Asbestos Abatement
- New Pipeline Construction
- Compressor and Pump Station Construction
- Process Facility Construction
- Pipeline Integrity/Rehabilitation

- Blasting and Painting
- Hydrostatic Testing
- Well Hook-Ups
- Horizontal Directional Drilling
- In-Service Welding/Hot Tapping Support
- Structural Welding
- Hydro-Excavation



- ROW and Facility Maintenance
- Project Management Support
- Pipeline Commissioning and Pigging
- Pipeline DOT Regulatory Compliance and Support

## CIVIL SERVICES:



### Concrete Work

- Sidewalks
- ADA Ramps
- Curb and Gutters
- Driveways
- Culverts
- Beams and Piers
- Site Work

### Erosion Control

- Silt Fencing
- Bio-Logs
- Drill Seeding
- Sodding
- Top Soil
- Rock Filter Dams
- Ditch Re-Grading/Shaping



- Fencing
- Brush Clearing
- Culvert Cleaning
- Small Sign Assembly
- Sewer/Water Manhole Adjustments

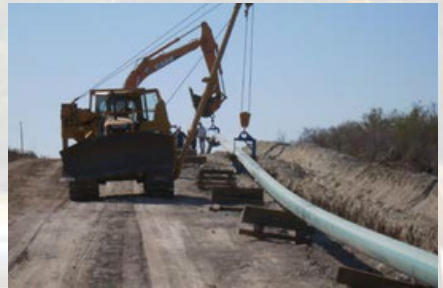


# REPRESENTATIVE PROJECTS

Epic's team has completed a variety of pipeline, facility, horizontal directional drill (HDD) and Integrity related Projects throughout Texas and Louisiana. In addition, Epic is also licensed to work in New Mexico.

## PIPELINE INTEGRITY

Epic's team has assisted in multiple integrity assessment for several pipelines. Our team's scope of work included providing supervision, welding, and equipment for the repair/replacement of pipe area anomalies identified by the use of smart pigging tools.

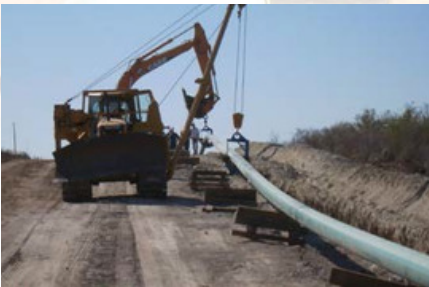
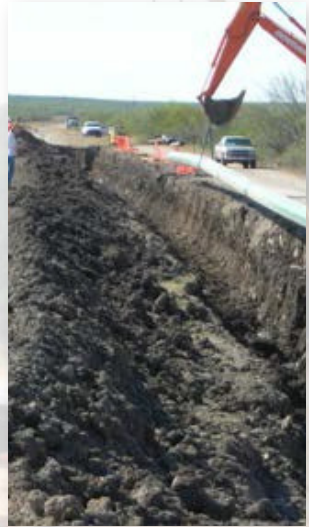


Epic has participated/assisted with multiple smart tool assessments for pipeline integrity assessments.

Following the results of those tool runs, Epic has assisted in identifying the repair location, excavated the area and performed the repairs required by the company. Repairs can include welding of pipe sleeves, blast and recoat, pipeline wraps and pipe replacement. We have performed these types of repairs for multiple companies including Enterprise, Kinder Morgan and DCP Midstream.

# PIPELINE CONSTRUCTION

Epic has completed several multi-mile gathering systems for several companies. With this process, we have worked with operations teams, surveying teams, material managers and have coordinated many of the material needs and delivery. When working with the gathering systems, our knowledge and experience is beneficial to the company we work with.



Epic has also constructed many regulated transmission lines. With these projects, we are also providing required documentation regarding weld maps, material test reports and other relative construction data documentation required by the companies.

## FACILITIES CONSTRUCTION

Additionally, Epic's team recently completed the installation of approximately 4,800 horsepower of new compression at an existing compressor station near Zapata, Texas. The project included setting three (3) new Cat-Ariel 3606 compressors, fabrication of the 24 inch suction and discharge piping, as well as required civil work. Epic has constructed several gas processing facilities and well hook-ups, in addition to installation of compressor stations.



## MAINTENANCE

Epic's team currently has maintenance contracts with numerous customers and assists in day to day maintenance activities, including facility painting, ROW and facility maintenance, vacuum excavation, maintenance welding, and various other tasks as requested.





## EPIC MANAGEMENT TEAM PROJECTS

Construction of approximately 5,100 feet of 24 inch crude pipeline and related facilities for Martin Midstream near the Corpus Christi Ship Channel.

Construction and installation of two (2) dual 6 inch coriolis meter stations for Copano Energy near Markham, Texas.

Construction of 10 miles of 10 inch hydrogen pipeline for MarkWest Energy through the congested Port of Corpus Christi industrial complex.

Installation of a 3,400 feet of 6 inch HDD across a wetland area for EOG Resources near Portland, Texas.

Decommissioning and abandoning of approximately 300 miles of the Rattlesnake 12 inch pipeline for Koch Pipeline.

Installation of 11 miles of 8 inch NGL pipeline in Prestonburg, Kentucky for MarkWest Energy.

Construction of 28 miles of 10 inch sour gas pipeline near Campbellton, Texas.

Integrity replacements on approximately 9 miles of 12 inch refined products pipeline for NuStar Energy near Refugio, Texas.

Conversion of approximately 35 miles of 12 inch refined products pipeline to natural gas near Fort Worth, Texas for Energy Transfer.

Multiple miles of various sized gathering lines, both steel and HDPE in west Texas

# SAFETY

The health and safety of our employees, clients, vendors and the public are core values at Epic. Our safety training is designed to instill each team member with a sense that what they do matters, and that one person can make a difference when it comes to safely completing a project.



We enforce industry leading standards that allow our team members to complete their designated work without injuring themselves and others. Our safety values and practices are supported through open communication across the company to address any hazards our workforce may face.

To facilitate management of our safety program and to ensure that all aspects of our business are regulatory compliant to industry standards, Epic is a member of the following organizations and consortiums:

- > Pipeline Testing Consortium, Inc.
- > National Compliance Management Service, Inc.
- > ISNetworld
- > Veriforce
- > PEC
- > Operator Qualification Certification
  - \*NCCER
  - \* OQSG